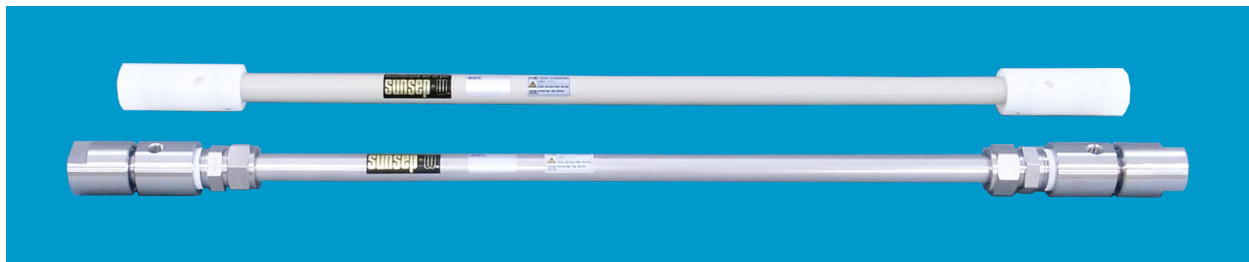


Membrane tube dryers for gas sample dehumidification

SWG - Series Multi-tube Dryers

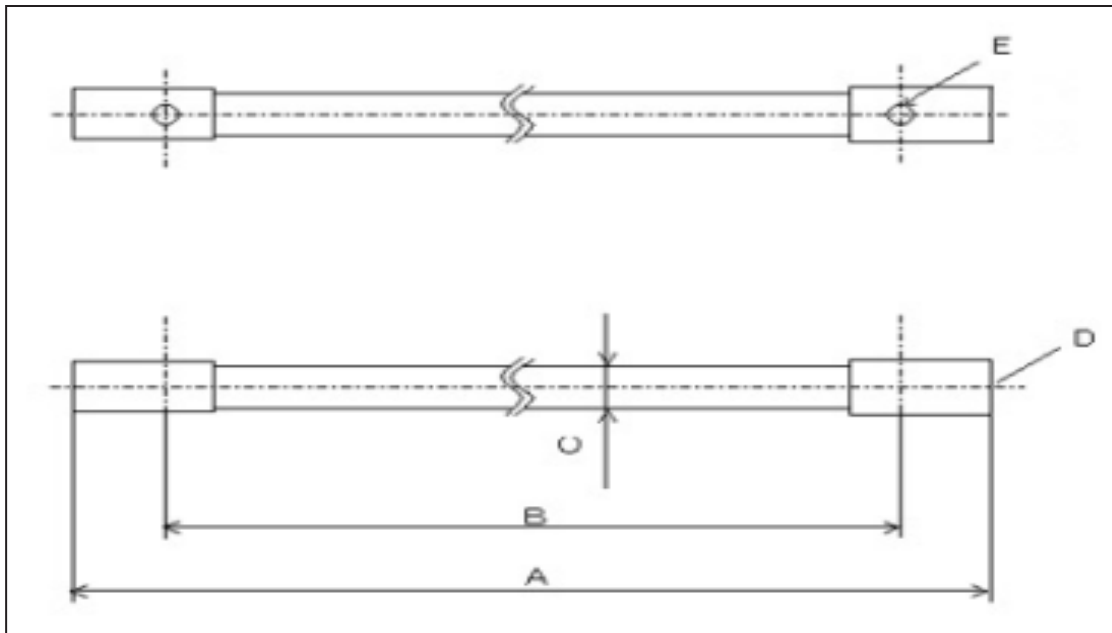


Most infrared or UV-based gas analyzers require a dry gas in order to operate efficiently and deliver accurate results. Sunsep's SWG 35 and 100 Series dryers utilize a very hydrophilic polymer that is very selective to water vapor only. With a countercurrent purge flow on the outside of the tubing, drying is continuous.

These dryers deliver equivalent performance to Nafion tube products and are interchangeable with them. They are widely used as a secondary polishing dryer downstream of a thermoelectric cooler or refrigerated dryer.

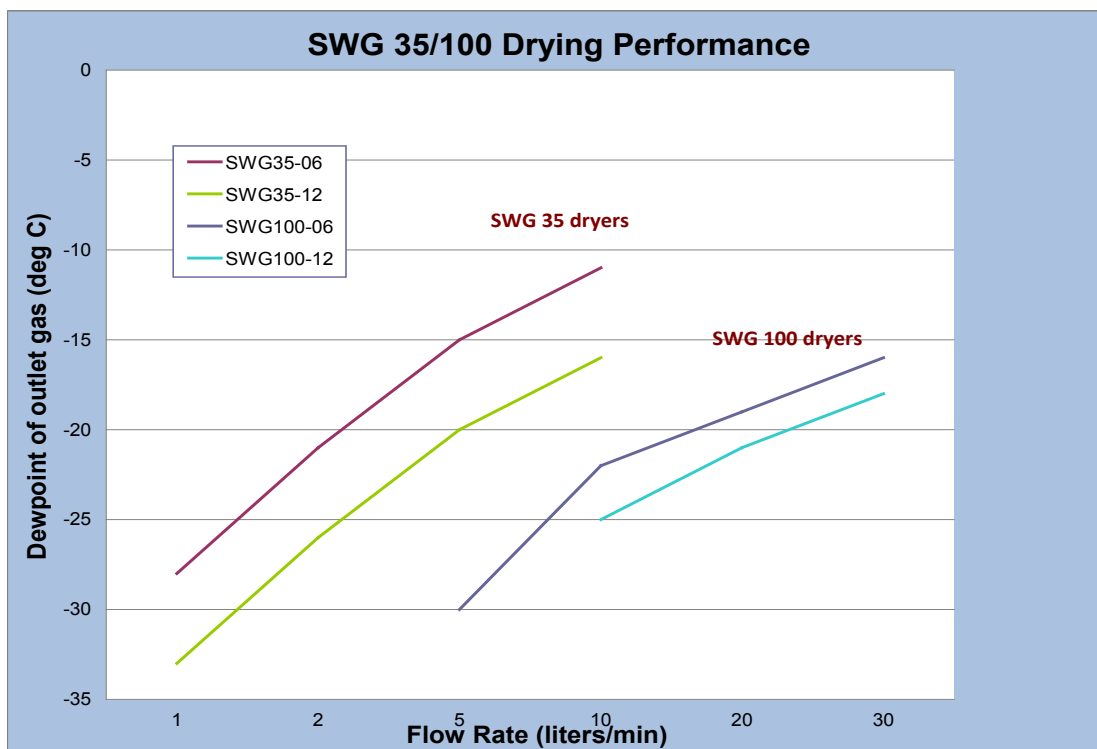
Product Features

- Dries continuously with countercurrent purge gas
- Equivalent performance to Nafion tube dryers
- Available in polypropylene, kynar or stainless steel
- Dryer lengths from 0.3m (12") to 1.2m (48")
- Selective to water vapor, with few exceptions



Dryer Dimensions (in.)

Model	A	B	C	D	E
035-06	28.1	23.6	0.8	1/4" NPT	1/8" NPT
035-12	51.7	47.2	0.8		
100-06	28.1	23.6	1.0		
100-12	51.7	47.2	1.0		



Canadian Distributor:



ESG is a leader in the supply of industrial and process filtration equipment and consumables and represents the complete Sunsep product line in Canada.

