

# AG Series

## Standard Brackish Water RO Elements



The A-Series, family of proprietary thin-film reverse osmosis membrane elements are characterized by high flux and high sodium chloride rejection. AG Standard Brackish Water Elements are selected when high rejection and operating pressures as low as 200 psig (1,379 kPa) are desired. These elements allow moderate energy savings, and are considered a standard in the industry.

**Table 1: Element Specification**

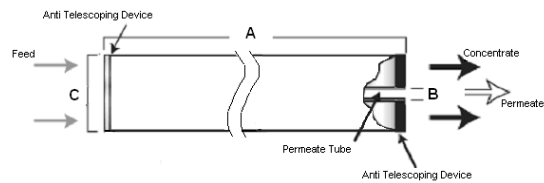
Membrane	A-Series, Thin-Film Membrane (TFM*)
----------	-------------------------------------

Model	Flow average gpd (m3/day)	Salt rejection average (NaCl) <sup>1,2</sup>	Salt rejection minimum (NaCl) <sup>1,2</sup>
AG2540FM	710 (2.7)	99.5%	99.0%
AG2540TM	710 (2.7)	99.5%	99.0%
AG4025T	1,560 (5.9)	99.5%	99.0%
AG4026F	1,560 (5.9)	99.5%	99.0%
AG4040C	2,350 (8.9)	99.5%	99.0%
AG4040CM	2,350 (8.9)	99.5%	99.0%
AG4040FM	2,200 (8.3)	99.5%	99.0%
AG4040FM WET	2,200 (8.3)	99.5%	99.0%
AG4040NM	2,200 (8.3)	99.2%	98.5%
AG4040TM	2,200 (8.3)	99.5%	99.0%
AG8040C	9,850 (37.3)	99.5%	99.0%
AG8040F	9,200 (34.8)	99.5%	99.0%
AG8040F WET	9,200 (34.8)	99.5%	99.0%
AG8040F 400	10,500 (39.8)	99.5%	99.0%
AG8040F 400 WET	10,500 (39.8)	99.5%	99.0%
AG8040N	9,200 (34.8)	99.2%	98.5%
AG8040N 400	10,500 (39.8)	99.2%	98.5%

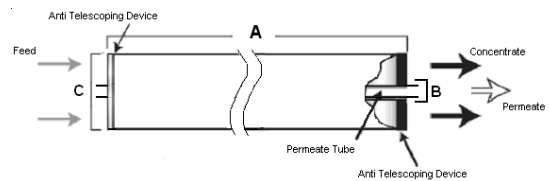
<sup>1</sup> Average salt rejection after 24 hours operation. Individual flow rate may vary +25%/-15%.

<sup>2</sup> Testing conditions: 2,000 ppm NaCl solution at 225 psig (1,551 kPa) operating pressure, 77 °F, pH 7.5 and 15% recovery.

Model	Active Area ft <sup>2</sup> (m <sup>2</sup> )	Outerwrap	Part Number
AG2540FM	29 (2.6)	Fiberglass	1206727
AG2540TM	29 (2.6)	Tape	1206729
AG4025T	60 (5.6)	Tape	1206754
AG4026F	60 (5.6)	Fiberglass	1206756
AG4040C	90 (8.4)	Cage	1206757
AG4040CM	90 (8.4)	Cage	1206759
AG4040FM	85 (7.9)	Fiberglass	1206761
AG4040FM WET	85 (7.9)	Fiberglass	3013808
AG4040NM	85 (7.9)	Net	1231785
AG4040TM	85 (7.9)	Tape	1206774
AG8040C	380 (35.3)	Cage	1222546
AG8040F	350 (32.5)	Fiberglass	1206779
AG8040F WET	350 (32.5)	Fiberglass	1239765
AG8040F 400	400 (37.2)	Fiberglass	1206784
AG8040F 400 WET	400 (37.2)	Fiberglass	1239764
AG8040N	350 (32.5)	Net	1231784
AG8040N 400	400 (37.2)	Net	1231786



**Figure 1: Element Dimensions Diagram – Female**



**Figure 2: Element Dimensions Diagram – Male**



Find a contact near you by  
visiting [ge.com/water](http://ge.com/water) or  
e-mailing [custhelp@ge.com](mailto:custhelp@ge.com).

**Global Headquarters**  
Trevose, PA  
+1-215-355-3300

**Americas**  
Watertown, MA  
+1-617-926-2500

**Europe/Middle East/Africa**  
Heverlee, Belgium  
+32-16-40-20-00

**Asia/Pacific**  
Shanghai, China  
+86 (0) 411-8366-6489

**Table 2: Dimensions and Weight**

Model <sup>1</sup>	Dimensions, inches (cm)			Boxed
	A	B <sup>2</sup>	C <sup>3</sup>	Weight lbs (kg)
AG2540FM	40.0 (101.6)	0.75 (1.90) OD	2.4 (6.1)	5 (2.3)
AG2540TM	40.0 (101.6)	0.75 (1.90) OD	2.4 (6.1)	5 (2.3)
AG4025T	25.0 (63.5)	0.625 (1.59)	3.9 (9.9)	5 (2.3)
AG4026F	26.0 (66.7)	0.625 (1.59)	3.9 (9.9)	6 (2.7)
AG4040C	40.0 (101.6)	0.625 (1.59)	3.9 (9.9)	8 (3.5)
AG4040CM	40.0 (101.6)	0.75 (1.90) OD	3.9 (9.9)	8 (3.5)
AG4040FM	40.0 (101.6)	0.75 (1.90) OD	3.9 (9.9)	8 (3.5)
AG4040FM WET	40.0 (101.6)	0.75 (1.90) OD	3.9 (9.9)	8 (3.5)
AG4040NM	40.0 (101.6)	0.75 (1.90) OD	3.9 (9.9)	8 (3.5)
AG4040TM	40.0 (101.6)	0.75 (1.90) OD	3.9 (9.9)	8 (3.5)
AG8040C	40.0 (101.6)	1.125 (2.86)	7.9 (20.1)	32 (14.5)
AG8040F	40.0 (101.6)	1.125 (2.86)	7.9 (20.1)	32 (14.5)
AG8040F WET	40.0 (101.6)	1.125 (2.86)	7.9 (20.1)	35 (16)
AG8040F 400	40.0 (101.6)	1.125 (2.86)	7.9 (20.1)	32 (14.5)
AG8040F 400 WET	40.0 (101.6)	1.125 (2.86)	7.9 (20.1)	35 (16)
AG8040N	40.0 (101.6)	1.125 (2.86)	7.9 (20.1)	32 (14.5)
AG8040N 400	40.0 (101.6)	1.125 (2.86)	7.9 (20.1)	32 (14.5)

<sup>1</sup>These elements are shipped dry unless specified WET

<sup>2</sup>Internal diameter unless specified OD (outside diameter).

<sup>3</sup>The element diameter (dimension C) is designed for optimum performance in GE Water & Process Technologies pressure vessels. Other pressure vessel dimension and tolerance may result in excessive bypass and loss of capacity.

**Table 3: Operating and CIP parameters**

Typical Operating Pressure	200 psig (1,379 kPa)
Typical Operating Flux	10-20GFD (15-35LMH)
Maximum Pressure	Tape 450 psig (3,103 kPa) Other outerwrap: 600 psig (4,137 kPa)
Maximum Temperature	Operating: 122°F (50°C) Cleaning: 122°F (50°C)
Recommended pH	Optimum rejection pH: 7.0-7.5, Operating Range pH: 4.0-11.0, Cleaning Range pH: 2.0-11.5
Recommended Pressure Drop	Over an element: 12 psig (83 kPa) Per housing: 50 psig (345 kPa)
Chlorine Tolerance	1,000+ ppm-hours, dechlorination recommended
Feedwater	NTU < 1 SDI < 5