

E-series M

Medium Reverse Osmosis Machines, 600 to 2700 liters per hour



Figure 1 : E4 M CE Series

When you mention reverse osmosis (RO), SUEZ is the first name to come to mind. Our E-series RO machines (Figure 1) are designed for durable operation, high quality product water production, easy installation, and straightforward control.

General Properties

Typical Applications

- Process ingredient water
- Safe drinking water
- Boiler feed water
- Ion exchange pre-treatment

Standard Features

- Automatic inlet shut-off valve
- Permeate and Concentrate flow meters
- Pre/post-filter, and primary pressure gauges
- Inlet low pressure switch
- Digital conductivity meter with temperature sensor
- Flow control center including concentrate and recycle valves
- Microprocessor control panel with one potential free contact for remote alarm, dosing pump or level control for permeate tank

Optional Features

- Clean in Place (CIP) system installed on a polypropylene frame suitable for retrofit.

Table 1: Operating Parameters

Average Operating Pressure	7-15 bars
Maximum Recovery	75%
Nominal Rejection	90-95%
Operating Temperature	5-35 °C
Inlet Pressure	3-6 bars
Design Temperature*	15 °C

* Varying the operating temperature will affect machine productivity

Table 2: Materials of Construction

Frame	Polypropylene frame (E4) Powder coated steel (E4H)
Membrane Elements	AK4040TM
Membrane Housing	Fiberglass Reinforced Plastic
Piping	PN 16
Cartridge Filter	Hytrex*, 5 micron

Find a contact near you by visiting www.suezwatertechnologies.com and clicking on "Contact Us."

*Trademark of SUEZ; may be registered in one or more countries.

©2017 SUEZ. All rights reserved.

Table 3 : E4H Specifications - 50 Hz

Model	E4-CE-600	E4-CE-900	E4-CE-1500	E4H-CE-1800	E4H-CE-2400	E4H-CE-2700
Base System	3020807	3020808	3020809	3020840	3020841	3020842
Including CIP	3021387	3021388	3020843	3020844	3020845	3020846
Flow Specifications						
Recovery	75%	75%	75%	75%	75%	75%
Permeate Rate l/h	600	900	1500	1800	2400	2700
Concentrate Rate l/h	200	300	500	600	800	900
Pump and Power						
Power Supply	3/400 VAC/50 Hz, Neutral Connection Required					
Power Consumption	1.5 kW	1.5 kW	2.2 kW	2.2 kW	2.2 kW	2.2 kW
Pump Manufacturer	KSB	KSB	KSB	KSB	KSB	KSB
Pump model	Movitec VF2-13	Movitec VF2-15	Movitec VF2-16	Movitec VF4-13	Movitec VF4-15	Movitec VF4-15
Membrane Elements and Filters						
Quantity	2	3	5	6	8	9
Array	1-1	1-1-1	1-1-1-1-1	1-1-1	2-1-1	2-1
Housing Configuration	Vertical	Vertical	Vertical	Horizontal	Horizontal	Horizontal
Pre-Filter Model	GX05-9 ¾	GX05-9 ¾	GX05-9 ¾	GX05-20	GX05-20	GX05-20
Pre-Filter Quantity	1	1	1	1	1	1
Connections						
Inlet	DN 15	DN 15	DN 20	DN 20	DN 25	DN 25
Permeate	DN 15	DN 15	DN 15	DN 15	DN 20	DN 20
Concentrate	DN 15	DN 15	DN 15	DN 15	DN 20	DN 20
Dimensions & Weights						
H*W*D mm (w/o CIP)	1650*720*700	1650*720*700	1650*720*700	1800*2600*750	1800*2600*750	1800*3500*750
H*W*D mm (with CIP)	1650*1120*700	1650*1120*700	1650*1120*700	1800*2600*750	1800*2600*750	1800*3500*750
Average Shipping Weight kg	210 +30 (CIP)	240 +30 (CIP)	315 +30 (CIP)	470 +30 (CIP)	485 +30 (CIP)	710 +30 (CIP)

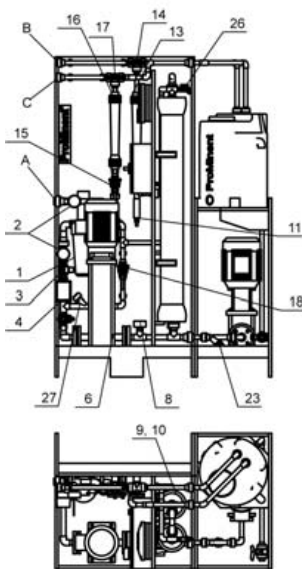


Figure 2: E4 M CE Series, range 600 to 1500

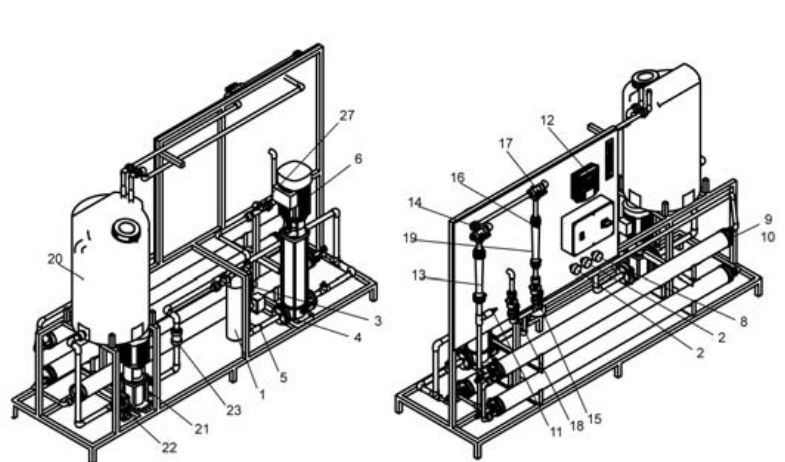


Figure 3: E4H M CE Series, range 1800 to 2700