

E-Series E4 & E4H EU

FACT SHEET

Medium reverse osmosis machines, 600 to 2700 liters per hour



Figure 1: E4 CE Series

When you mention reverse osmosis (RO), Veolia is the first name to come to mind. Our E-series RO machines (Figure 1) are designed for durable operation, high-quality product water production, easy installation, and straightforward control.

General Properties

Typical Applications

- Process ingredient water
- Safe drinking water
- Boiler feed water
- Ion exchange pre-treatment

Standard Features

- Automatic inlet shut-off valve
- Permeate and Concentrate flow meters
- Pre/post-filter and primary pressure gauges
- Inlet low-pressure switch
- Digital conductivity meter with temperature sensor
- Flow control center, including concentrate and recycle valves
- Siemens LOGO PLC with one potential free contact for remote alarm, dosing pump, or level control for permeate tank
- CE & UKCA marked for sale in the EU and UK

Optional Features

- Clean in Place (CIP) system installed on a polypropylene frame suitable for retrofit.

Table 1: Operating Parameters

Average Operating Pressure	7–15 bars
Maximum Recovery	75%
Nominal Rejection	90-95%
Operating Temperature	5-35 °C
Inlet Pressure	3-6 bars
Design Temperature¹	15 °C

¹ Varying the operating temperature will affect machine productivity

Table 2: Materials of Construction

Frame	Polypropylene frame (E4) Powder coated steel (E4H)
Membrane Elements	AK4040TM
Membrane Housing	Fiberglass Reinforced Plastic
Piping	PN 16
Cartridge Filter	Hytrex*, 5 micron

Table 3 : E4 & E4H Specifications - 50 Hz

Model	E4-CE-600	E4 CE-900	E4-CE-1500	E4H-CE-1800	E4H-CE-2400	E4H-CE-2700
Base System	3172606	3172608	3172680	3172682	3172684	3172686
Including CIP	3172607	3172609	3172681	3172683	3172685	3132687
Flow Specifications						
Recovery	75%	75%	75%	75%	75%	75%
Permeate Rate l/h	600	900	1500	1800	2400	2700
Concentrate Rate l/h	200	300	500	600	800	900
Pump and Power						
Power Supply	3/400 VAC/50 Hz, Neutral Connection Required					
Power Consumption	1.5 kW	1.5 kW	2.2 kW	2.2 kW	2.2 kW	2.2 kW
Pump Manufacturer	KSB	KSB	KSB	KSB	KSB	KSB
Pump model	Movitec VF2-13	Movitec VF2-15	Movitec VF2-16	Movitec VF4-13	Movitec VF4-15	Movitec VF4-15
Membrane Elements and Filters						
Quantity	2	3	5	6	8	9
Array	1-1	1-1-1	1-1-1-1-1	1-1-1	2-1-1	2-1
Housing Configuration	Vertical	Vertical	Vertical	Horizontal	Horizontal	Horizontal
Pre-Filter Model	GX05-9 ¾	GX05-9 ¾	GX05-9 ¾	GX05-20	GX05-20	GX05-20
Pre-Filter Quantity	1	1	1	1	1	1
Connections						
Inlet	DN 15	DN 15	DN 20	DN 20	DN 25	DN 25
Permeate	DN 15	DN 15	DN 15	DN 15	DN 20	DN 20
Concentrate	DN 15	DN 15	DN 15	DN 15	DN 20	DN 20
Dimensions & Weights						
H*W*D mm (w/o CIP)	1650*720*700	1650*720*700	1650*720*700	1800*2600*750	1800*2600*750	1800*3500*750
H*W*D mm (with CIP)	1650*1120*700	1650*1120*700	1650*1120*700	1800*2600*750	1800*2600*750	1800*3500*750
Average Shipping Weight kg	210 +30 (CIP)	240 +30 (CIP)	315 +30 (CIP)	470 +30 (CIP)	485 +30 (CIP)	710 +30 (CIP)

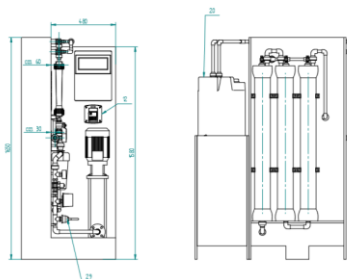


Figure 2: E4 M CE Series, range 600 to 1500

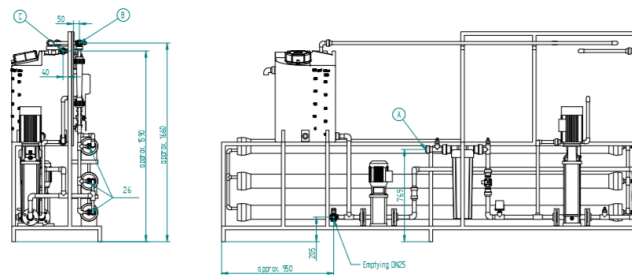


Figure 3: E4H M CE Series, range 1800 to 2700

Veolia Water Technologies
 Please contact us via:
www.veoliawatertechnologies.com